



Product overview

Overview

1. Industrial keyboards
 1. Stainless steel keyboards
 2. Plastic keyboards
 3. Silicone keyboards
 4. Backlit industrial switches
2. Customized solutions
 1. Customized keyboards
 2. Membrane keypads
 3. Rubber keypads
 4. Capacitive keypads
 5. Complete solutions

1.1 Stainless steel keyboards

General features

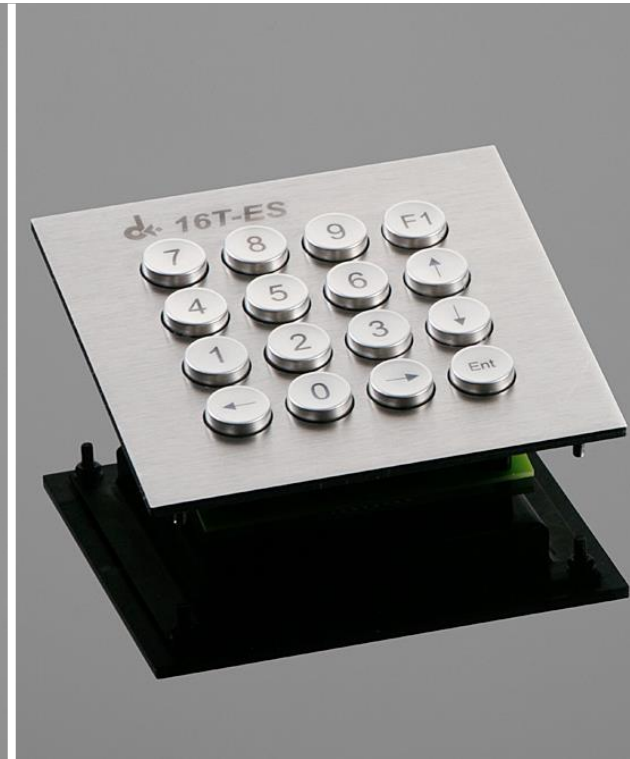
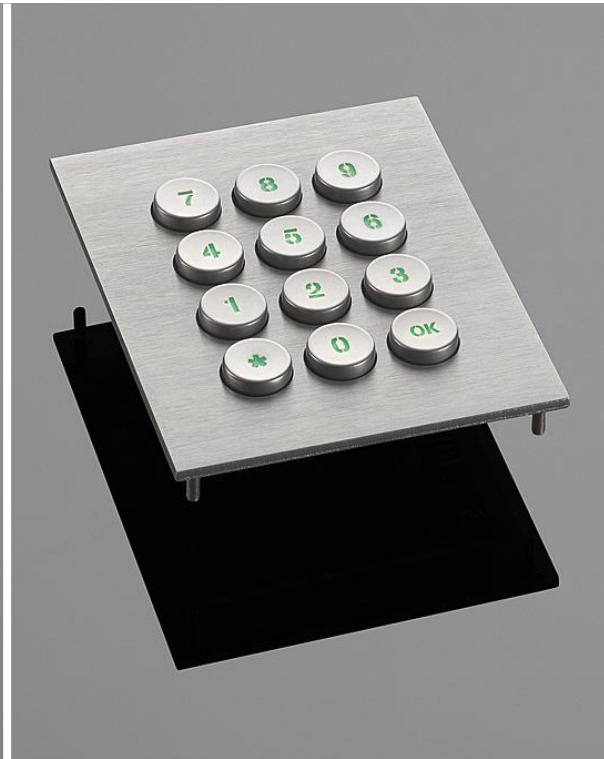
- All our stainless steel keyboards are:
 - For outdoor or industrial use - IK09 + IP65, Storage temperature -40°C to +70°C
 - Very durable - 10 million ops.
 - Made with 3,25mm travel keys with 0,65 N operation force - high operating comfort
 - Made with ergonomic 15mm keycaps
 - Available in any customized layout from quantities of one piece - symbols are done by laser etching
 - Available with different connection options - USB, PS/2, AT, Matrix or customized
 - Made in Germany
 - Available with customized front panels and other customizations



1.1 Numeric keypads

Stainless steel keyboards

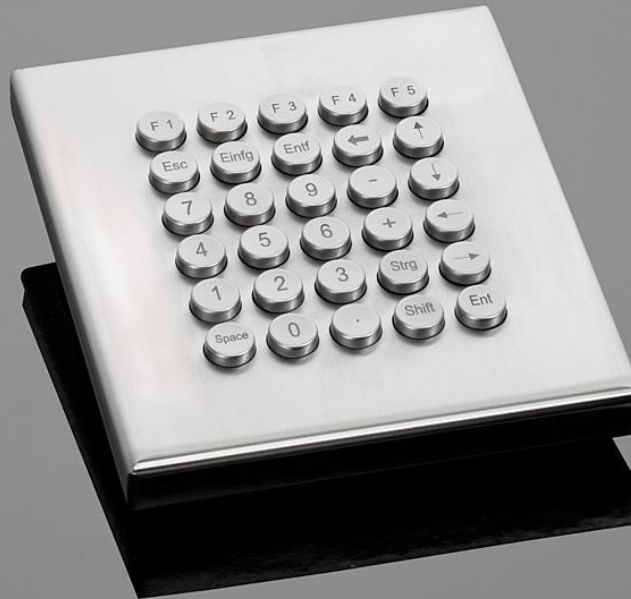
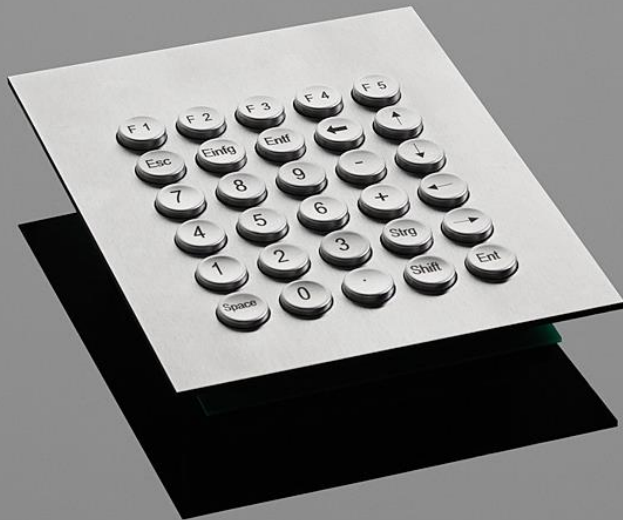
- Keypads with 4, 12 and 16 keys with or without front panel
- Keypads with 4 and 12 keys are also available with backlight
- Typical use cases: ticketing, vending, access control



1.1 | 30T-ES

Stainless steel keyboards

- Keypad with 30 keys with front panel or as standalone keyboard
- Freely programmable with or programming tool
- Typical use cases: industrial use, e.g. machine control



1.1 | 62T-ES

Stainless steel keyboards

- Keyboard with 62 keys, with or without frontpanel or with wallmount or desktop housing
- Available with trackball or touchpad
- Smaller keys with just 13mm diameter (instead of 15mm)
- Typical use cases: industrial use with small space for keyboards, information terminals



1.1 | 65T-ES

Stainless steel keyboards

- Keypads with 65 keys, with or without frontpanel or with wallmount or desktop housing
- Available with trackball or touchpad
- Typical use cases: all industrial and public application



1.1 | 82T-ES-TB25

Stainless steel keyboards

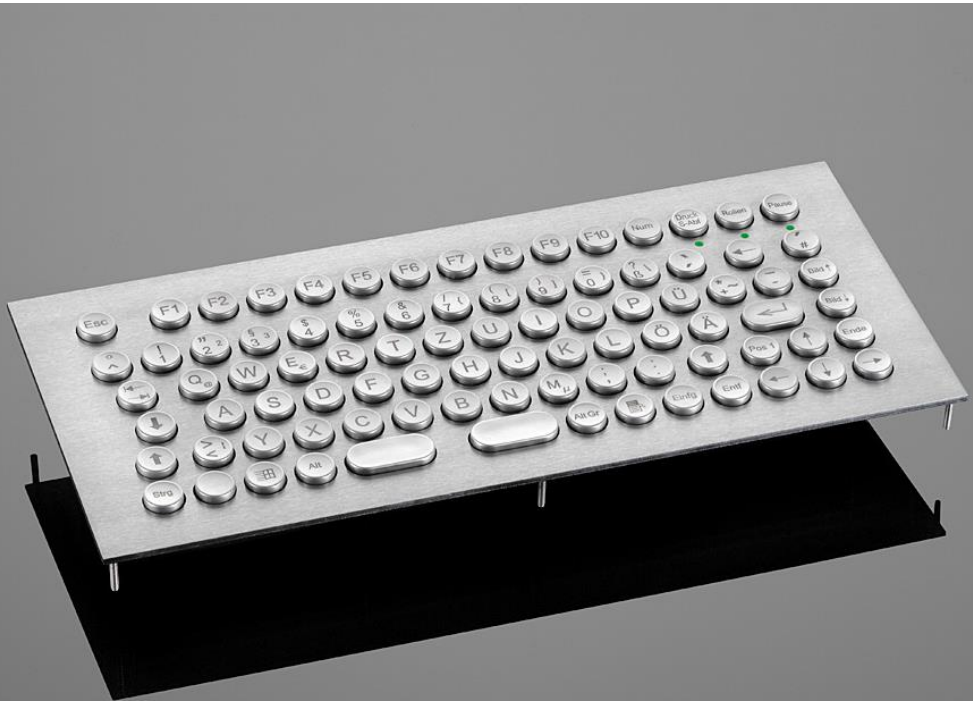
- Keyboard with 82 keys and integrated small 25mm trackball
- Mounting from backsides
- Typical use cases: industrial applications



1.1 | 86T-ES

Stainless steel keyboards

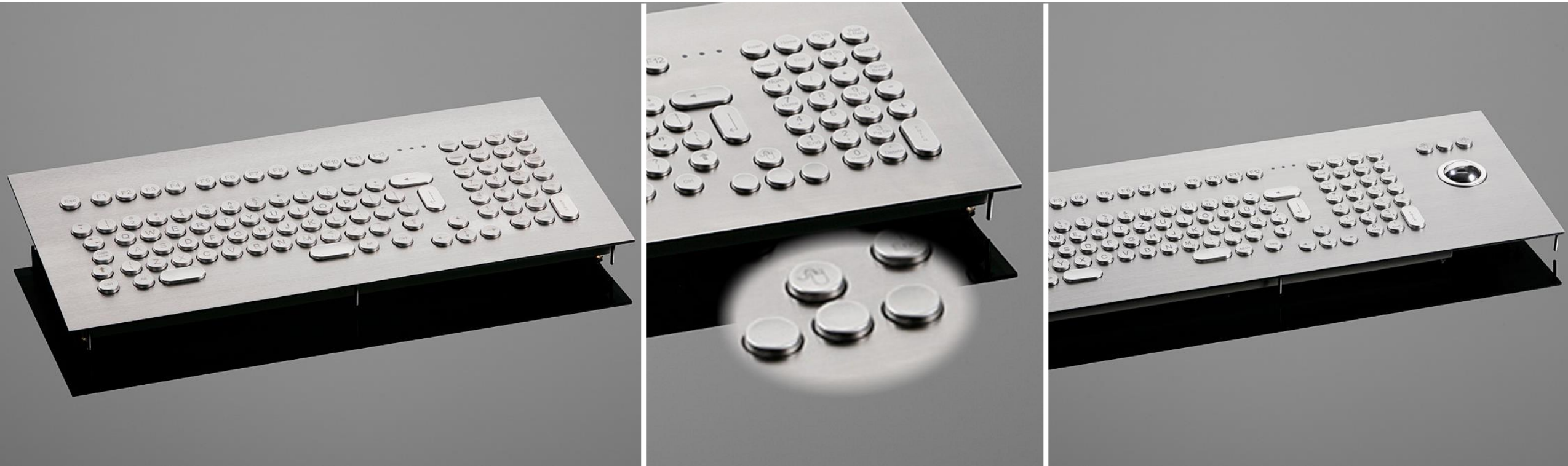
- Keyboard with 86 keys, with or without frontpanel, with stainless steel housing or with wallmount or desktop housing
- Available with trackball or touchpad
- Typical use cases: all industrial and public application



1.1 | 102T-ES

Stainless steel keyboards

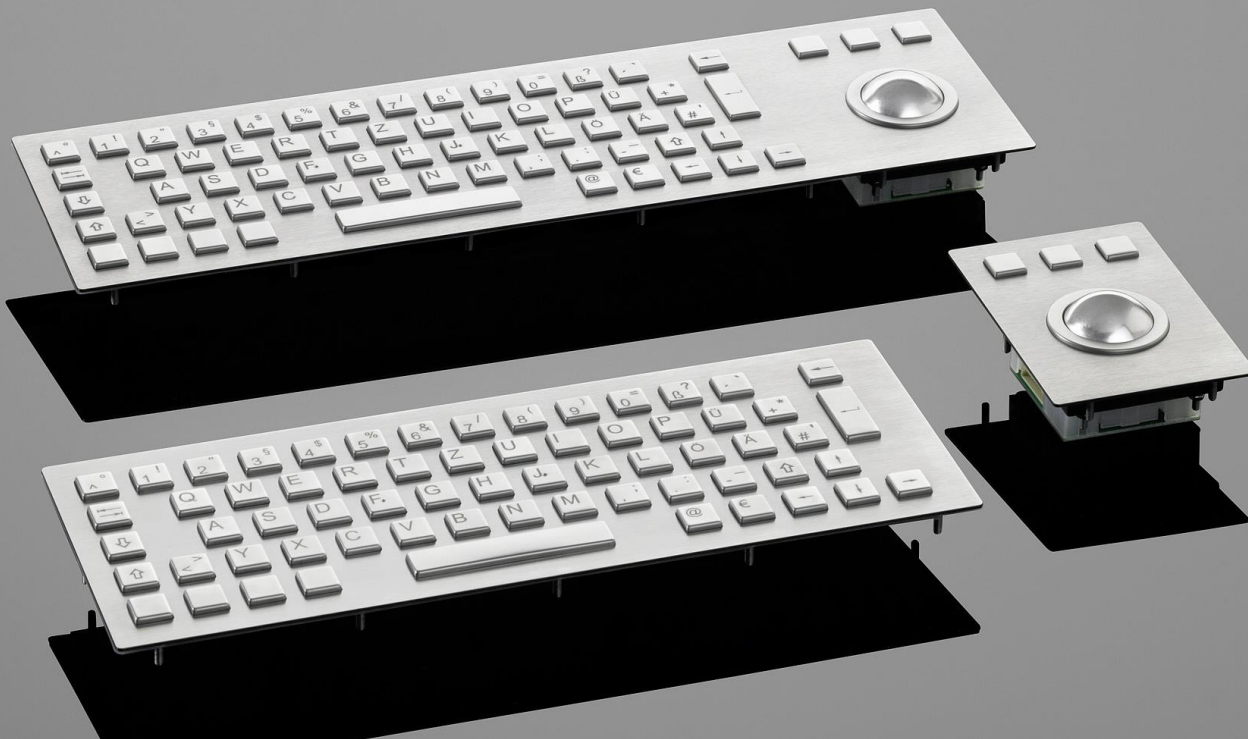
- Keyboard with 102 keys, with frontpanel
- Available with trackball or with finger mouse
- Typical use cases: all industrial and public applications where the full range of functions is required



1.1 65T-ES ATK / 84T-ES ATK

Stainless steel keyboards

- Keyboard with 65 or 84 keys, with frontpanel or with wallmount or desktop housing
- Available with trackball or touchpad
- simpler construction with silicone mat instead of single switch and therefore cheaper
- Typical use cases: all price sensitive application



1.1 | 85T-ES-TB13 ATK

Stainless steel keyboards

- Keyboard with 85 keys small 13mm trackball and special housing design for keyboard drawers
- Price on request, no single pieces
- Typical use cases: high quality solution for industrial drawers



1.1 103T-ES Drawer

Stainless steel keyboards

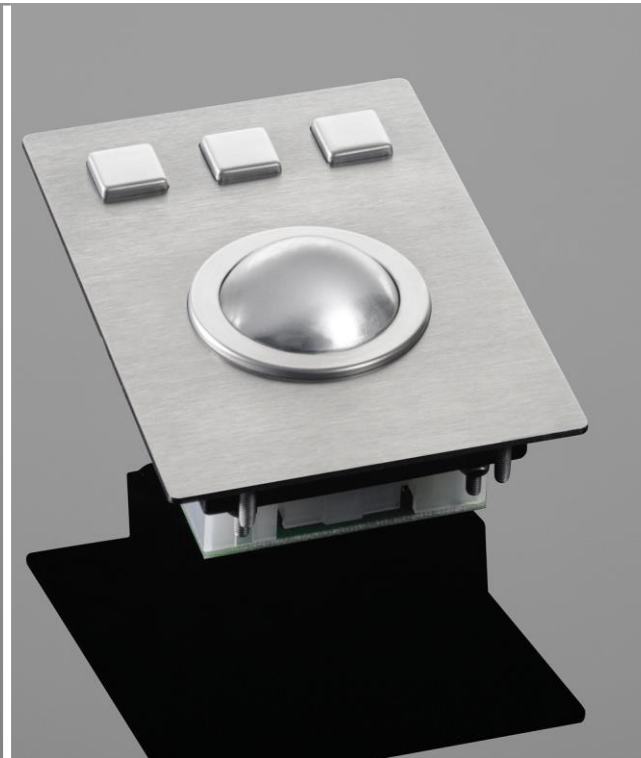
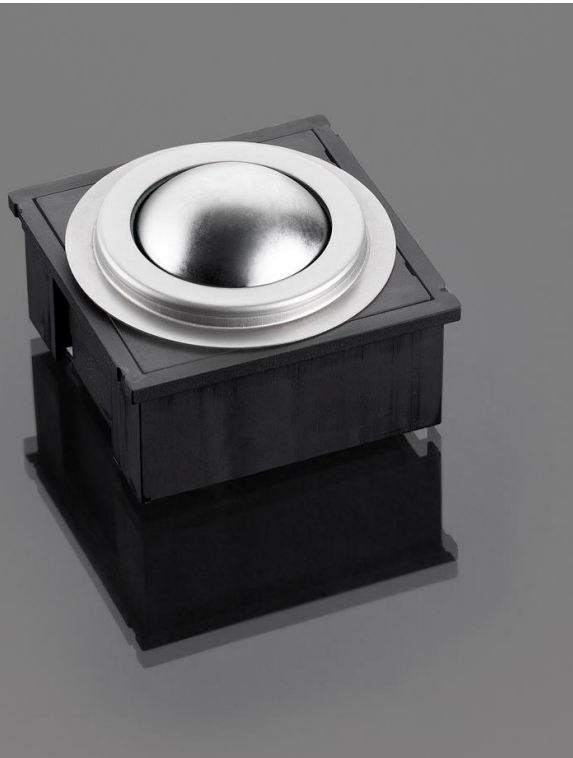
- Drawer keyboard with 103 keys, integrated trackball
- For installation in 19" racks
- excellent gliding drawer
- Typical use cases: industrial applications in cabinet, rack design



1.1 Trackballs

Stainless steel keyboards

- Production of our own 38mm stainless steel or plastic trackball
- Comfortable operation without hand fatigue
- Also available in other sizes (13, 25, or 50mm)



1.2 | DS86W

Plastic keyboards

- Keyboard with 86 keys in black or white, with desktop housing, frontpanel or in a drawer
- Available with backlit keys, Finger mouse or mounting bolts
- EMC shielding and other customizations
- Typical use cases: industrial or military applications



1.2 | DS102W / DS104W

Plastic keyboards

- Keyboard with 102 or 104 keys in black or white, with desktop housing, frontpanel or in a drawer
- Available with backlit keys or Finger mouse
- EMC shielding and other customizations
- Typical use cases: industrial or military applications



1.2 | DS24TW

Plastic keyboards

- Keypad with 24 keys in black, with plastic housing and stainless steel backplate
- Available with backlit keys and mounting bolts
- Freely programmable with or programming tool
- Typical use cases: industrial, logistics



1.2 | W30 / W60 / W90

Plastic keyboards

- Keypad with 30, 60 or 90 keys in black or pebble grey, with desktop housing or without housing
- changeable keys with different key sizes, can be labeled with insertion plates
- Freely programmable with or programming tool
- Typical use cases: customizable to any industrial application



1.3 | DS83S

Silicone keyboards

- Keyboard with 83 keys, with different front panel versions or as drawer keyboard
- Available with trackball or touchpad
- Available with high function keys
- Typical use cases: industrial application



1.3 DS85S / DS105S TP

Silicone keyboards

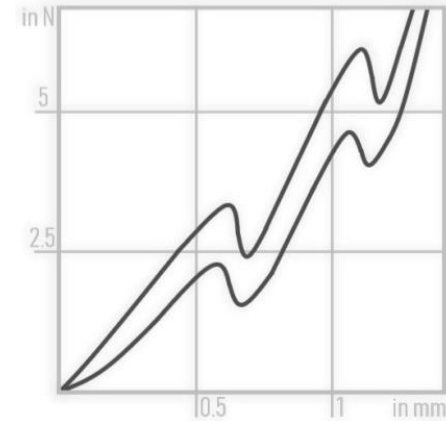
- Keyboard with 85 keys or 105 keys + touchpad and dimmable backlight
- Full silicon rubber keyboard with stainless steel backplate (with or without mounting bolts)
- Tested according to IP68 and MIL-STD
- Typical use cases: industrial, logistics, military and naval applications



1.4 DS1T (Double / Single / Capacitive)

Backlit industrial switches

- Backlit industrial switch family: single action, double action and capacitive switch
- easy retrofitting into existing systems
- modular design in small quantities, basic technology for customized solutions
- Typical use cases: HMI panels and other industrial devices



2.1 Backlit long stroke keyboards

Customized keyboards

- Military and naval keyboards
- Quality and inhouse testing according to military and naval standards
- classification of the standards is usually done by customer



2.1 Customized housings

Customized keyboards

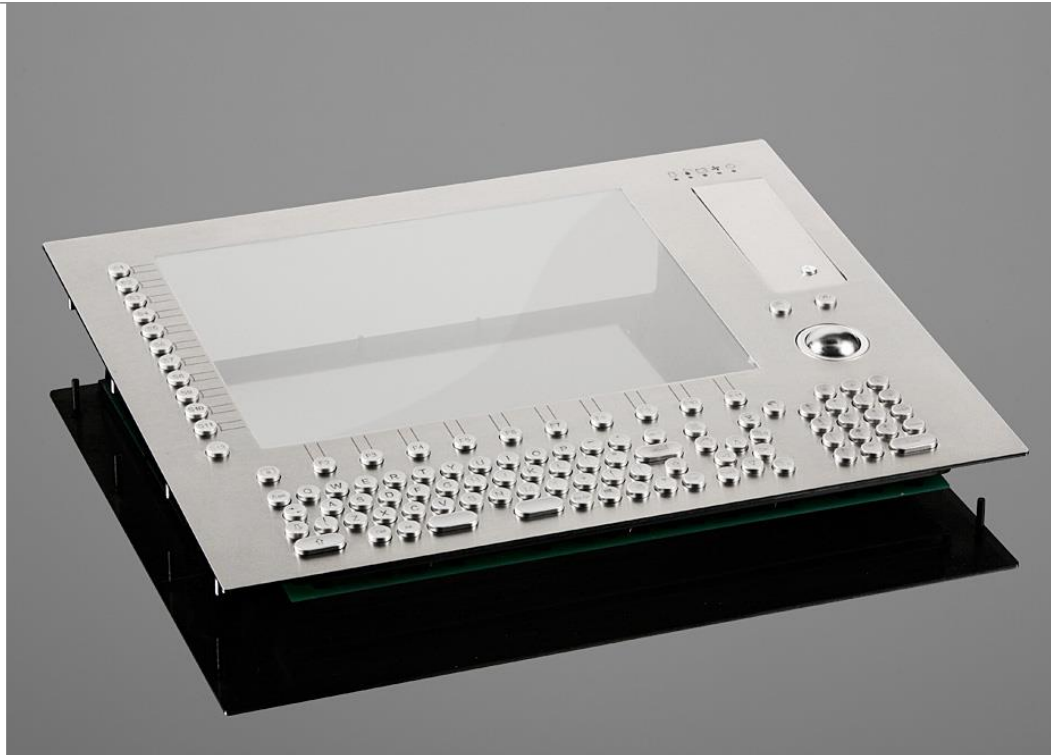
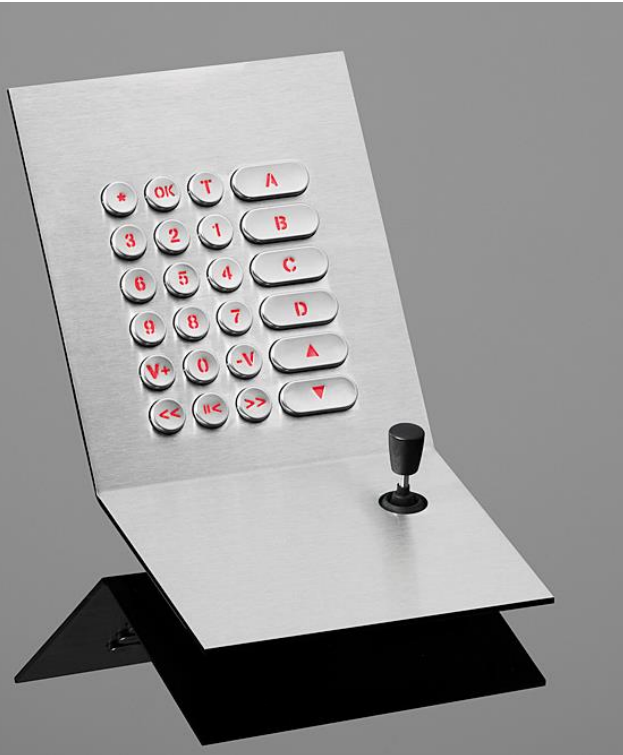
- Customized housings made of steel or plastics
- With shielding, painting and other customization



2.1 Customized stainless steel keyboards

Customized keyboards

- development of fully customized stainless steel keyboards for any application
- backlit keycaps, keycaps with special shapes, integration of windows, openings, joysticks, trackballs ...
- special housing construction, special drawers



2.1 Customized keycaps

Customized keyboards

- own parts and tool design
- almost any design can be implemented
- different switch technologies, key shapes, structures, backlighting and printing



2.2 | Membranes for all use cases

Membrane keypads

- customized membranes manufactured in Taiwan
- sophisticated and high quality designs can be realized
- typical applications: Industrial equipment ...



2.2 Automotive and medical devices

Membrane keypads

- production according to IATF 16949 (automotive) and EN ISO 13485 (medical)



2.3 | Silicone keypads

Rubber keypads

- Rubber keypads for many different application in the industrial and automotive sector



2.4 | Capacitive keypads

- Capacitive operating elements behind glass, PMMA, PC material or decor foils



2.5 | Complete solutions

- Customized housing solutions, key shapes, braille keys
- Combination of different technologies in one HMI unit



2.5 | Complete solutions

- integrated keypads and displays in a customized or standard housing
- small and high volume series
- electronics and printed circuit board development
- partial implementation of simple software



2.5 | Complete solutions

- Customized panels
- Assembling of switches and complete HMI panels in Germany

